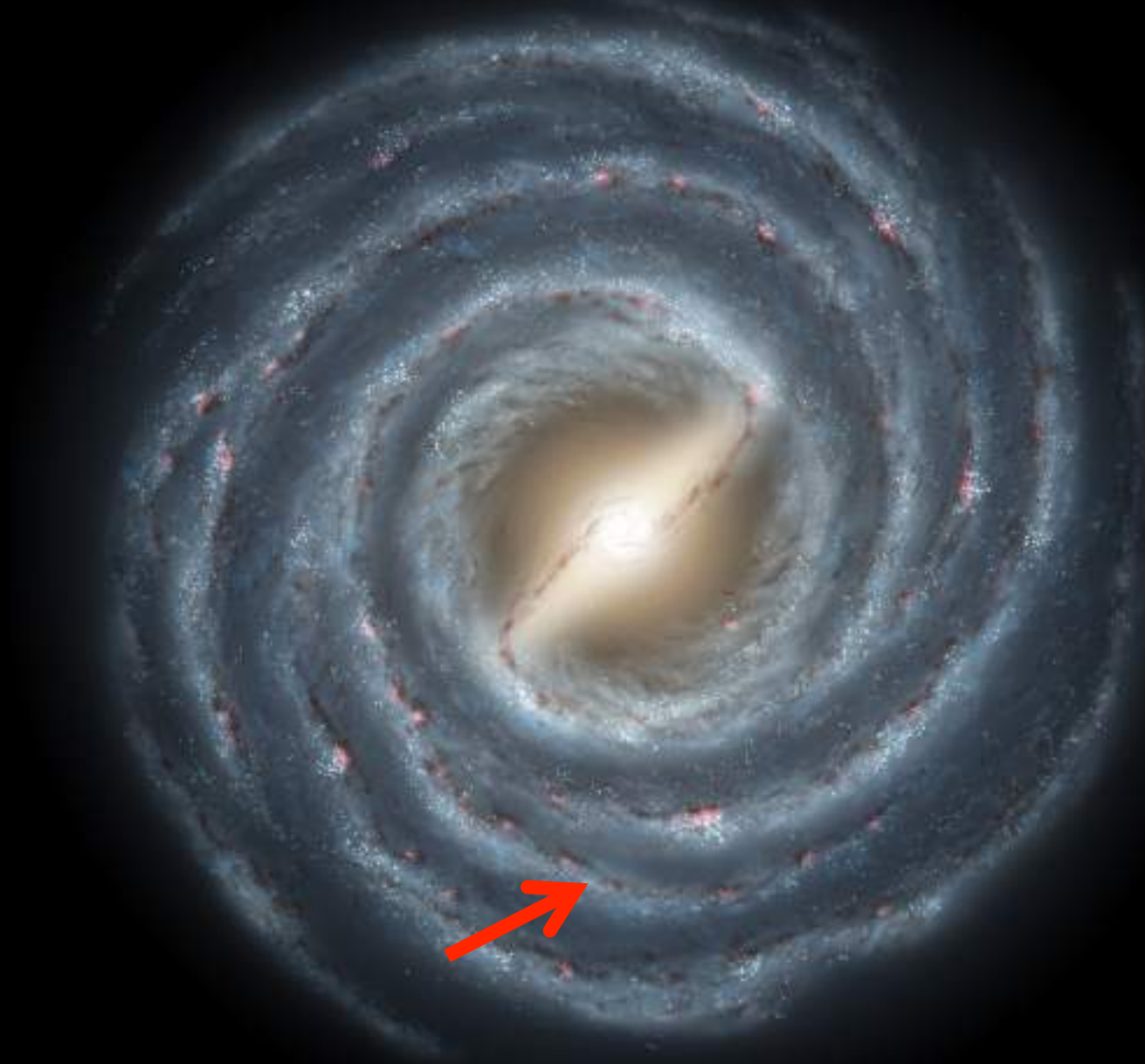


# Planet For Sale



# **Planet Earth's books just don't add up**

## **Balance Sheet**

**Hugely under-valued as natural capital and social capital are off balance sheet.**

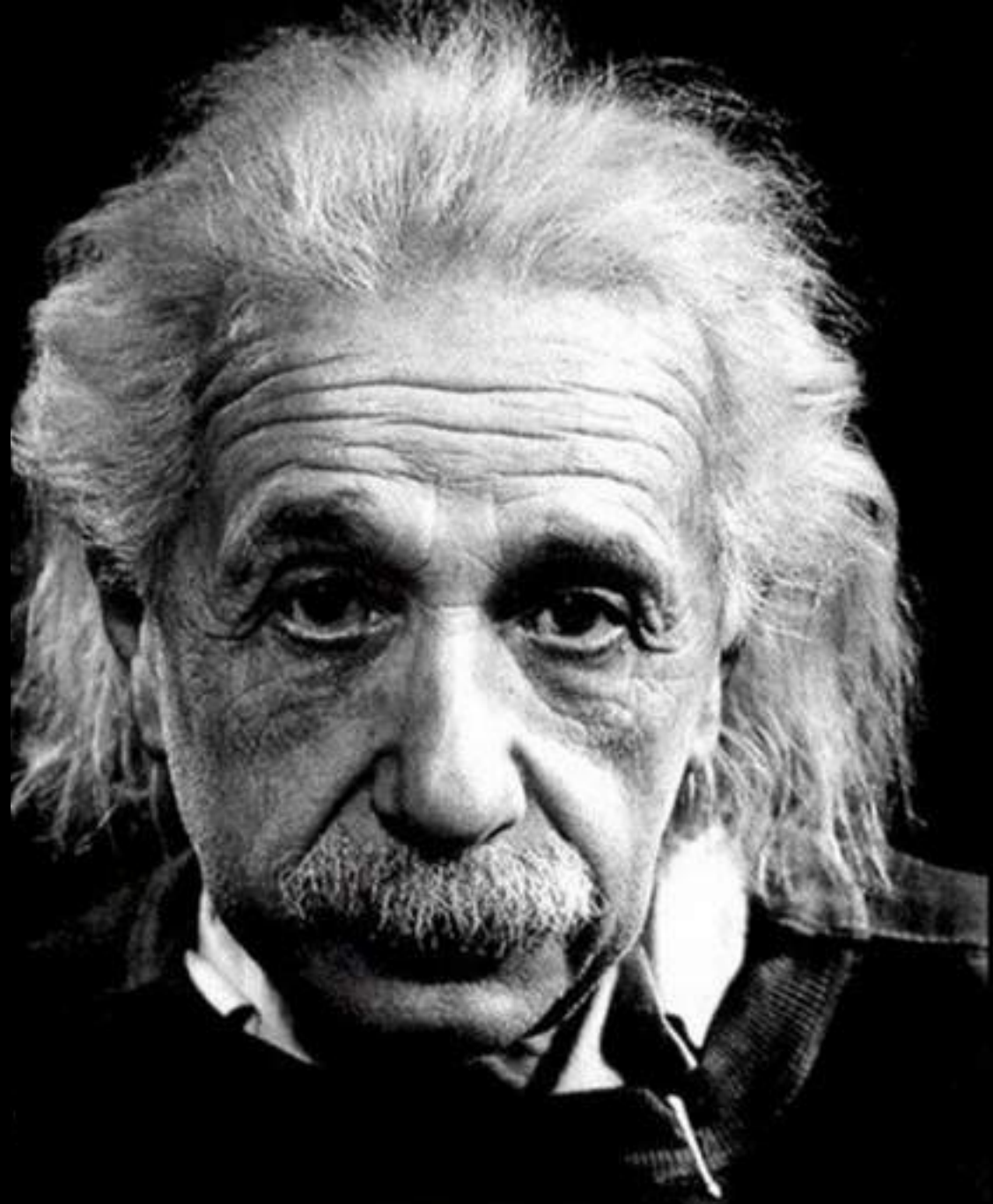
## **Profit and Loss Account**

**Auditors are scrutinizing the P&L as it appears whilst revenues have been recorded the costs have been fraudulently understated.**

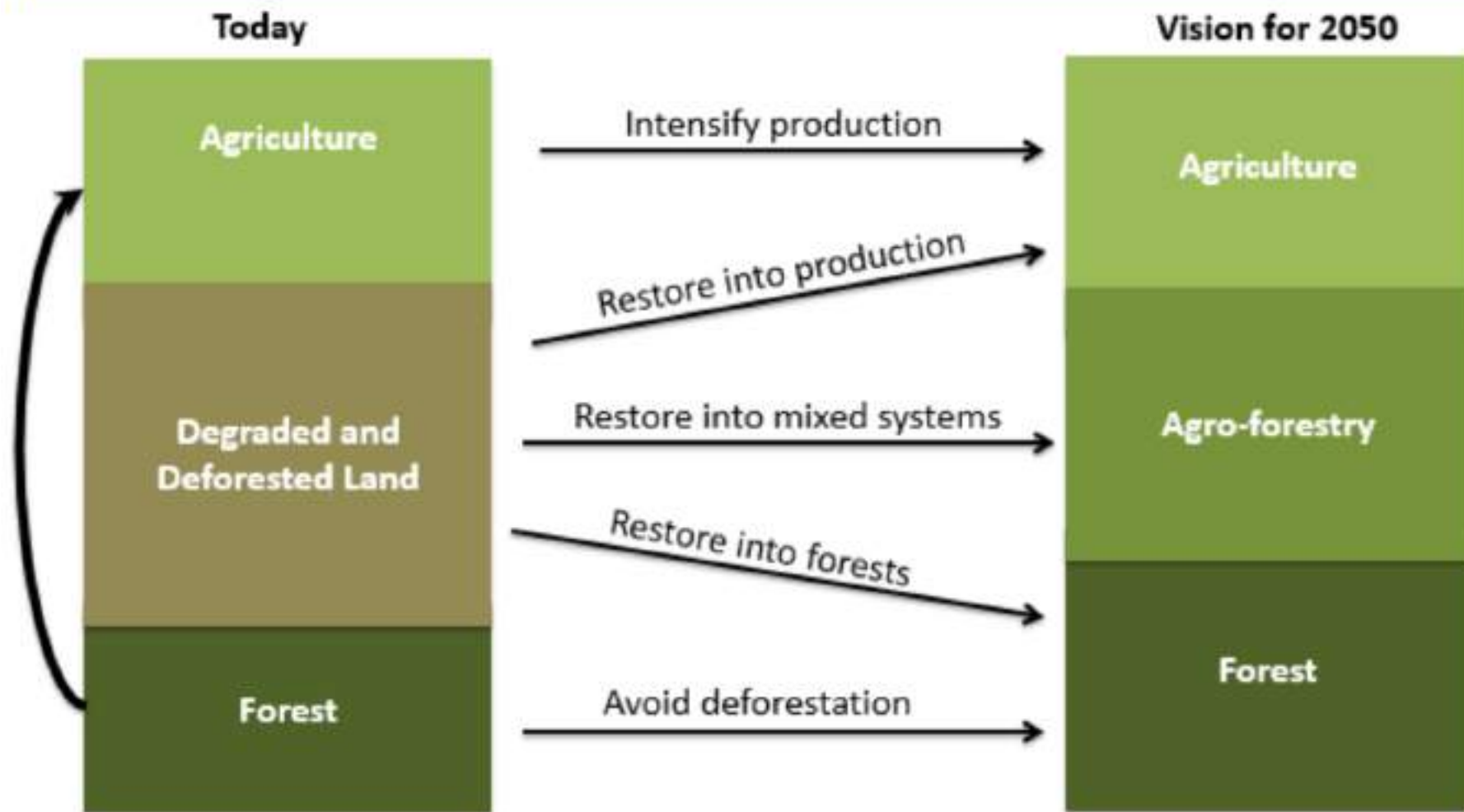
## **Cash Flow Statement**

**Non-current assets, and especially land, have not been amortised.**

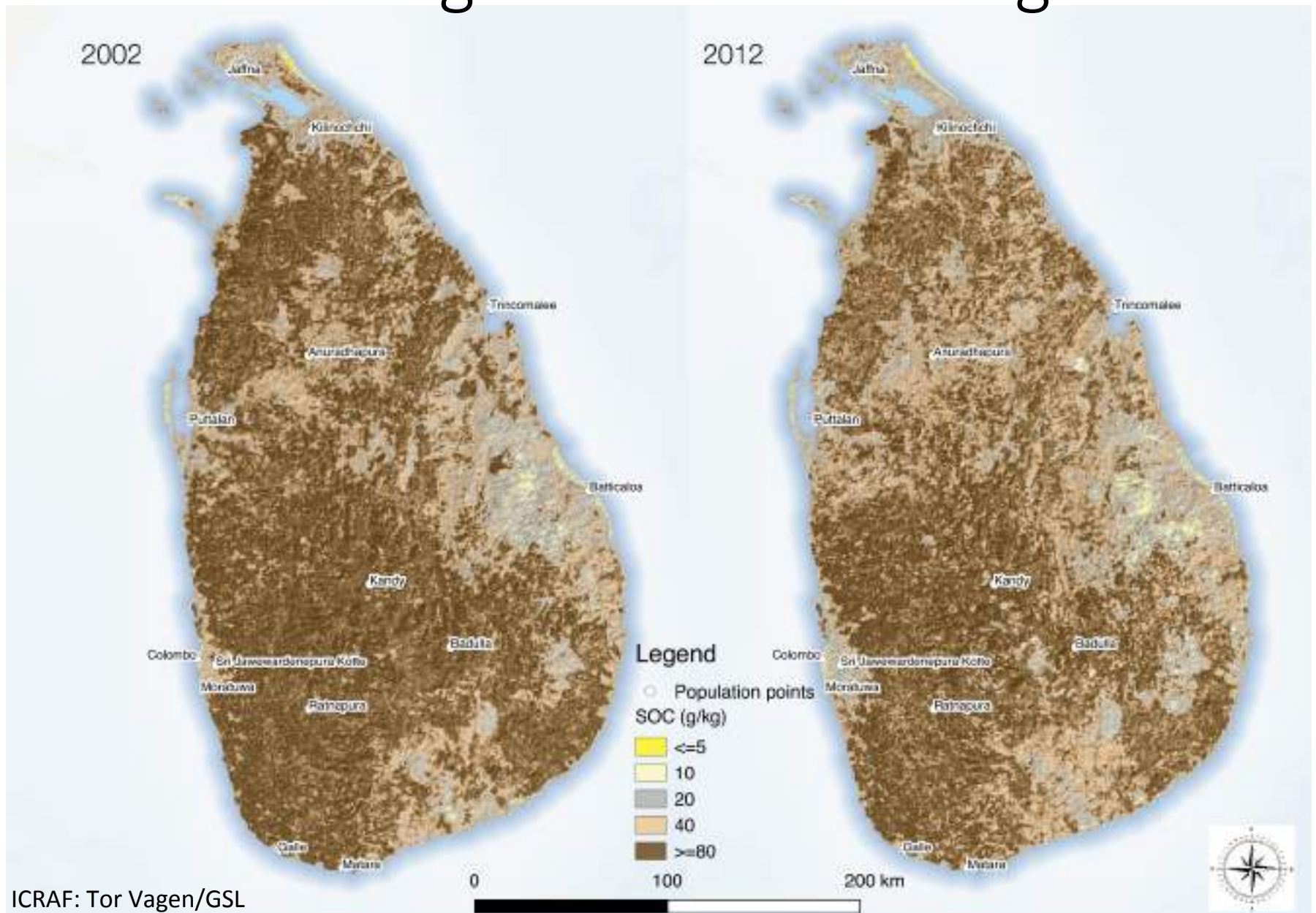
**Einstein's  
Theory  
of  
Restoration**

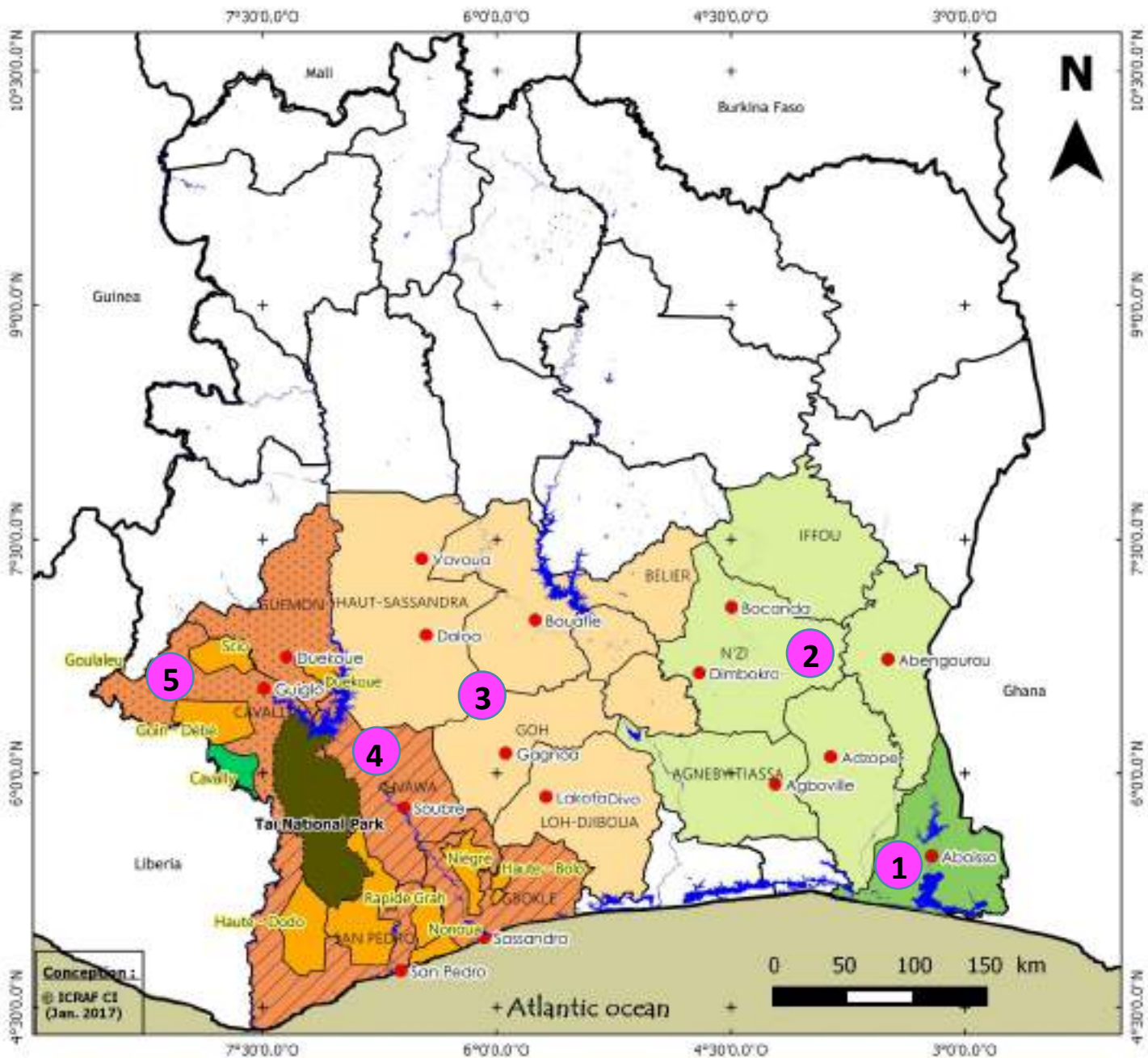


# OPPORTUNITY: RESTORE PRODUCTIVITY AND FUNCTION



# Soil Organic Carbon changes





**Legend**

- Cocoa district
- Cocoa Basin**
  - Before 1960
  - From 1960 to 1970
  - From 1970 to 1980
  - From 1980 to present
- New cocoa basin**
  - 1980 - 2002
  - 2002 to present
- Protected Area of South West**
  - Tai National Park
  - High infiltrated forest
  - Medium infiltrated forest
- Other**
  - Water body
  - Atlantic ocean
  - Region boundary
  - Country boundary

Conception I.  
© ICRAF CI  
(Jan. 2017)

# **What do we need to fix (simultaneously)?**

- 1. Cocoa swollen shoot disease (CSSV)**
- 2. Deforestation**
- 3. Profitability**
- 4. Soil fertility**
- 5. Superior planting materials**
- 6. Institutional dysfunctions**
- 7. Financial challenges**

# Imagination, demonstration and belief

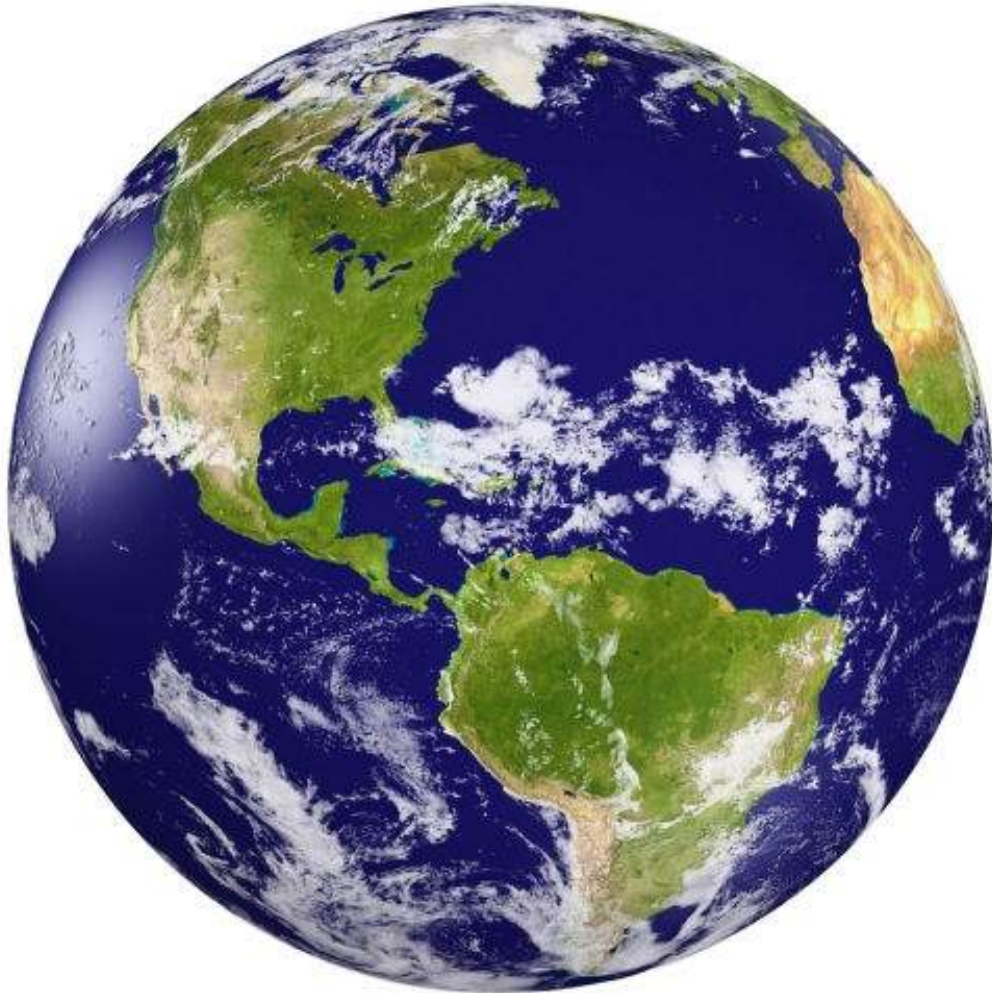


**Northern Tigray, Ethiopia**





# Withdrawn from open sale – Tenants buy out



- Integrated design
- Real price of carbon
- Realign incentives
- Attract more capital
- Blended:
  - finance
  - development
  - risk