

S
P
A
T
I
A
L

D
E
T
E
R
M
I
N
I
N
G

WHY?
SDGs

S.O.S.!

G
L
O
B
A
L

L
O
C
A
L

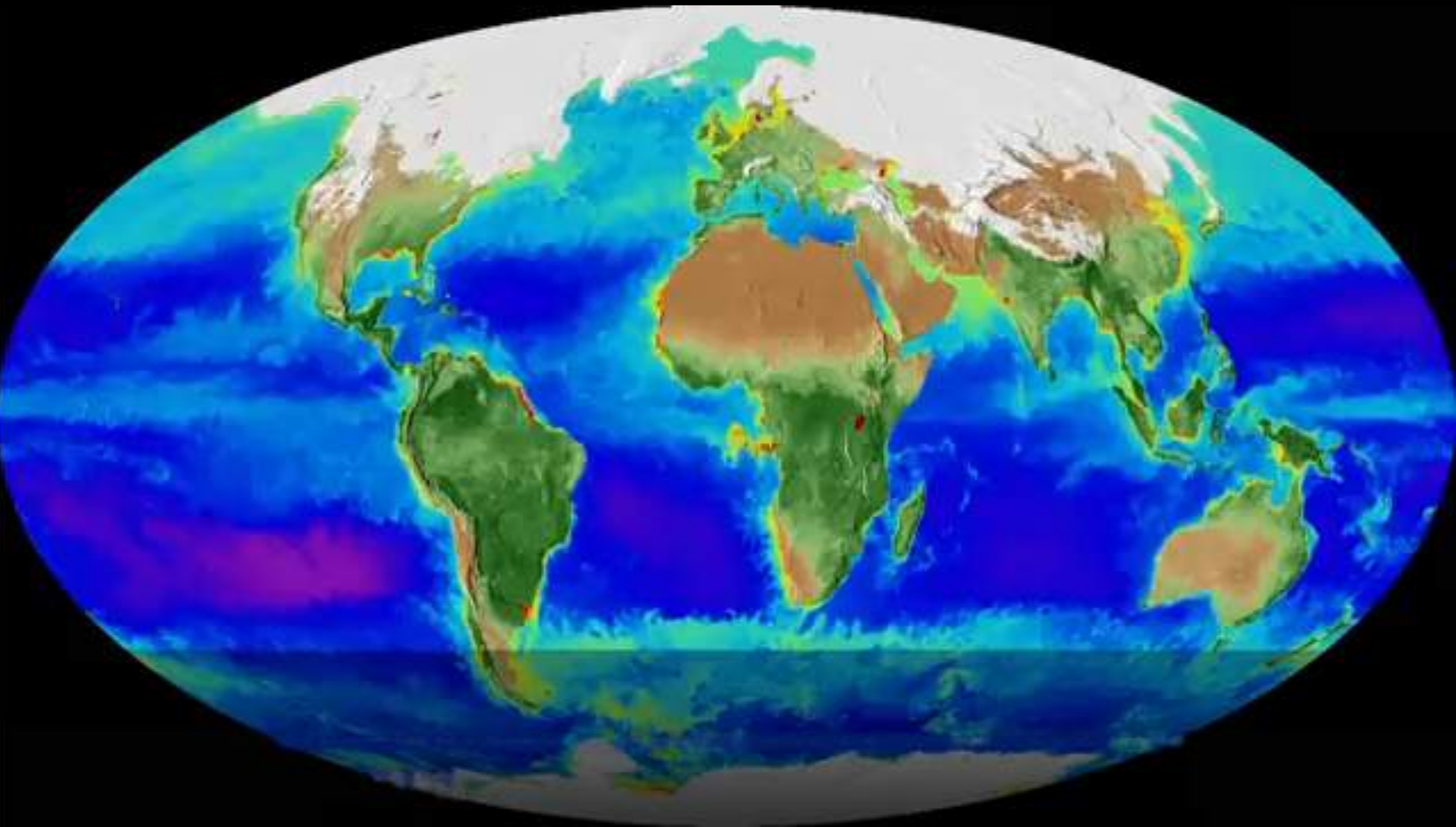
P
E
R
C
E
P
T
I
O
N

A
C
T
I
O
N

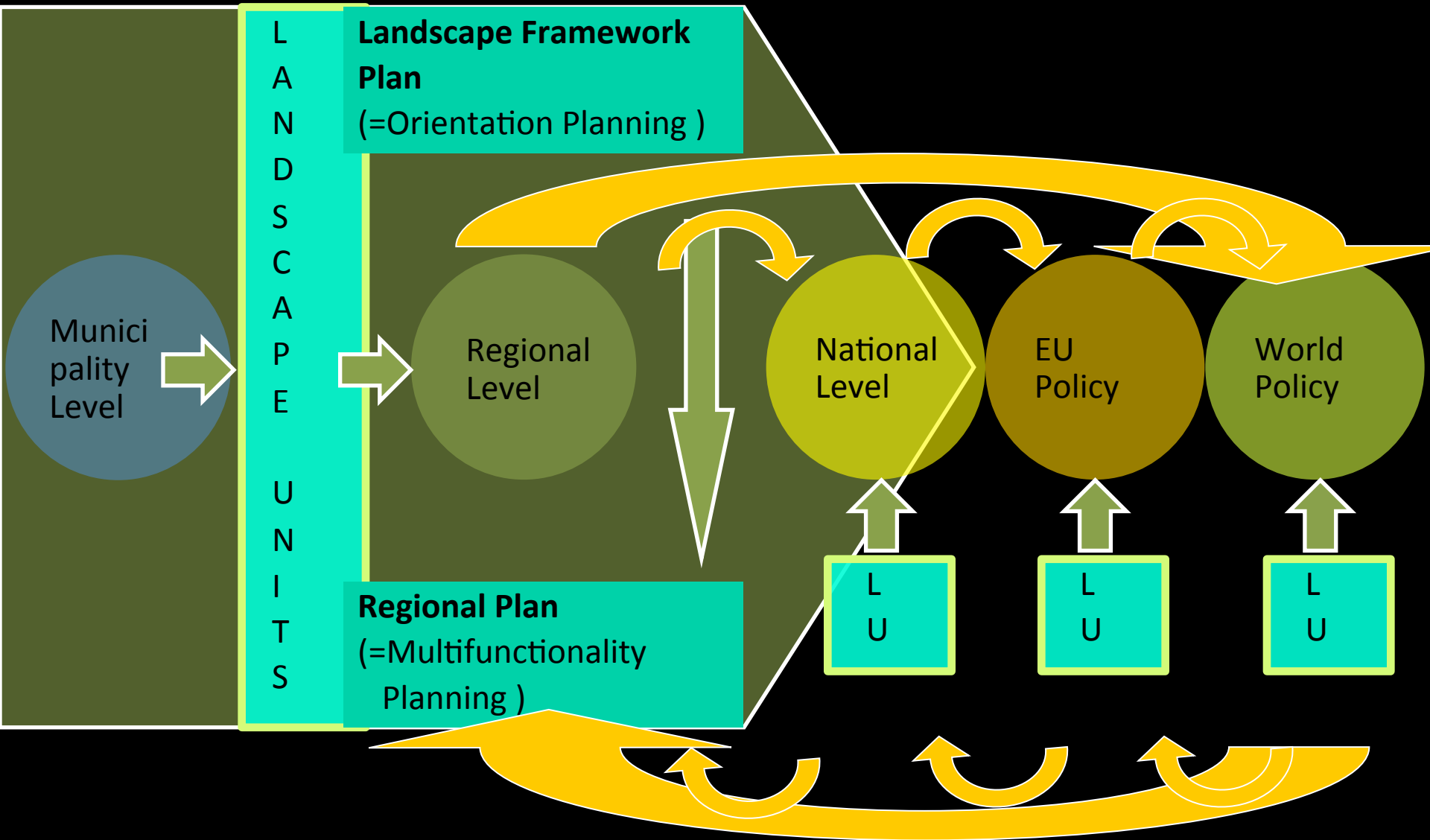
in Landscapes
in Lusatia
in Spree Forest

Region

HOMEWORLD!



Source: slightly changed after <https://www.youtube.com/watch?v=N2Ra2fp5De8>; also compare <https://www.theguardian.com/science/video/2017/nov/18/its-a-delicate-place-nasa-captures-20-years-of-earths-seasonal-changes-video>

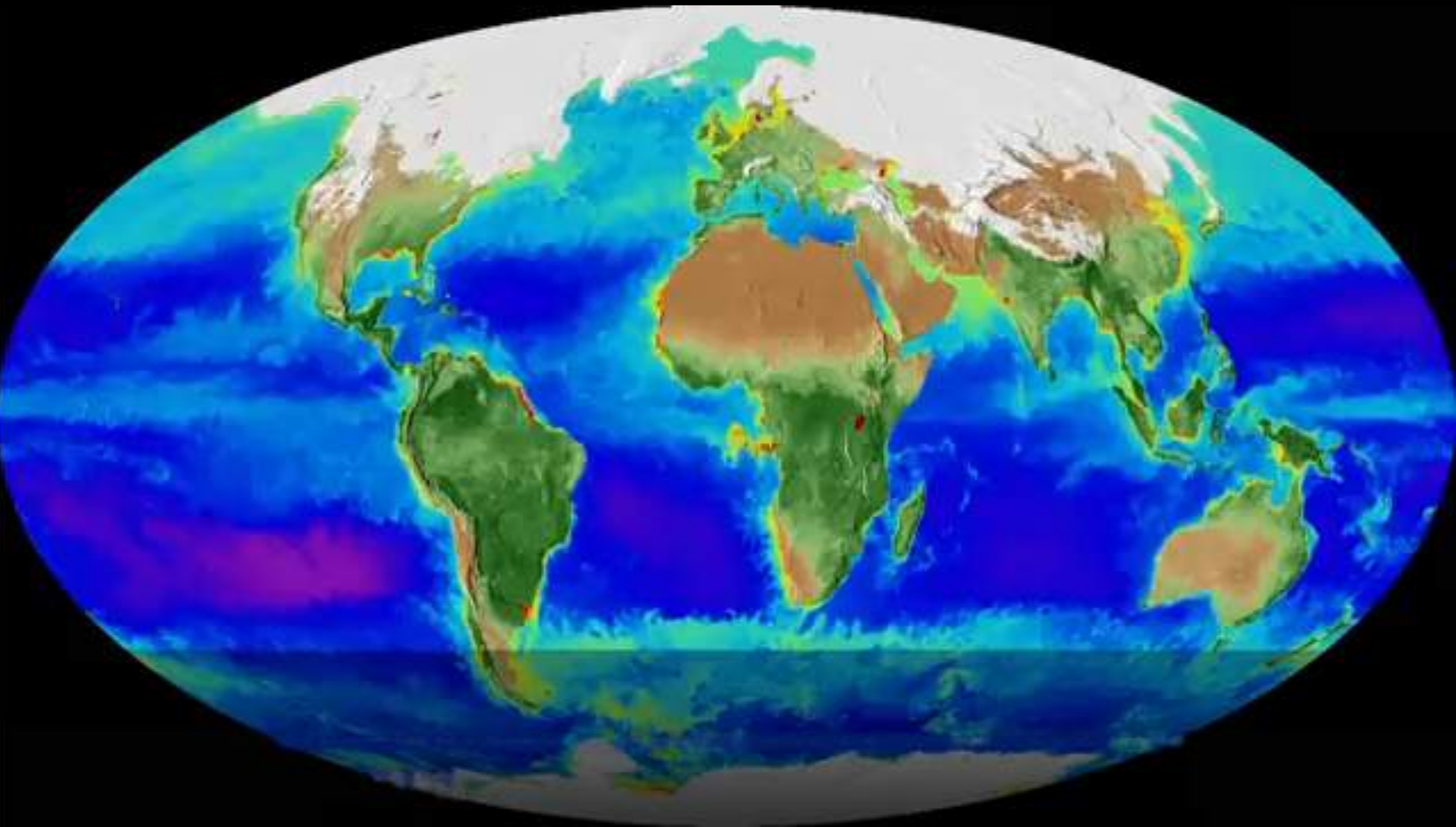


Landscape Units (LU) as a transferor into Global Regions and backwards (counter-current principle)(changed by the author after Reinstädler 2011, p. 57, 2013, p. 61)

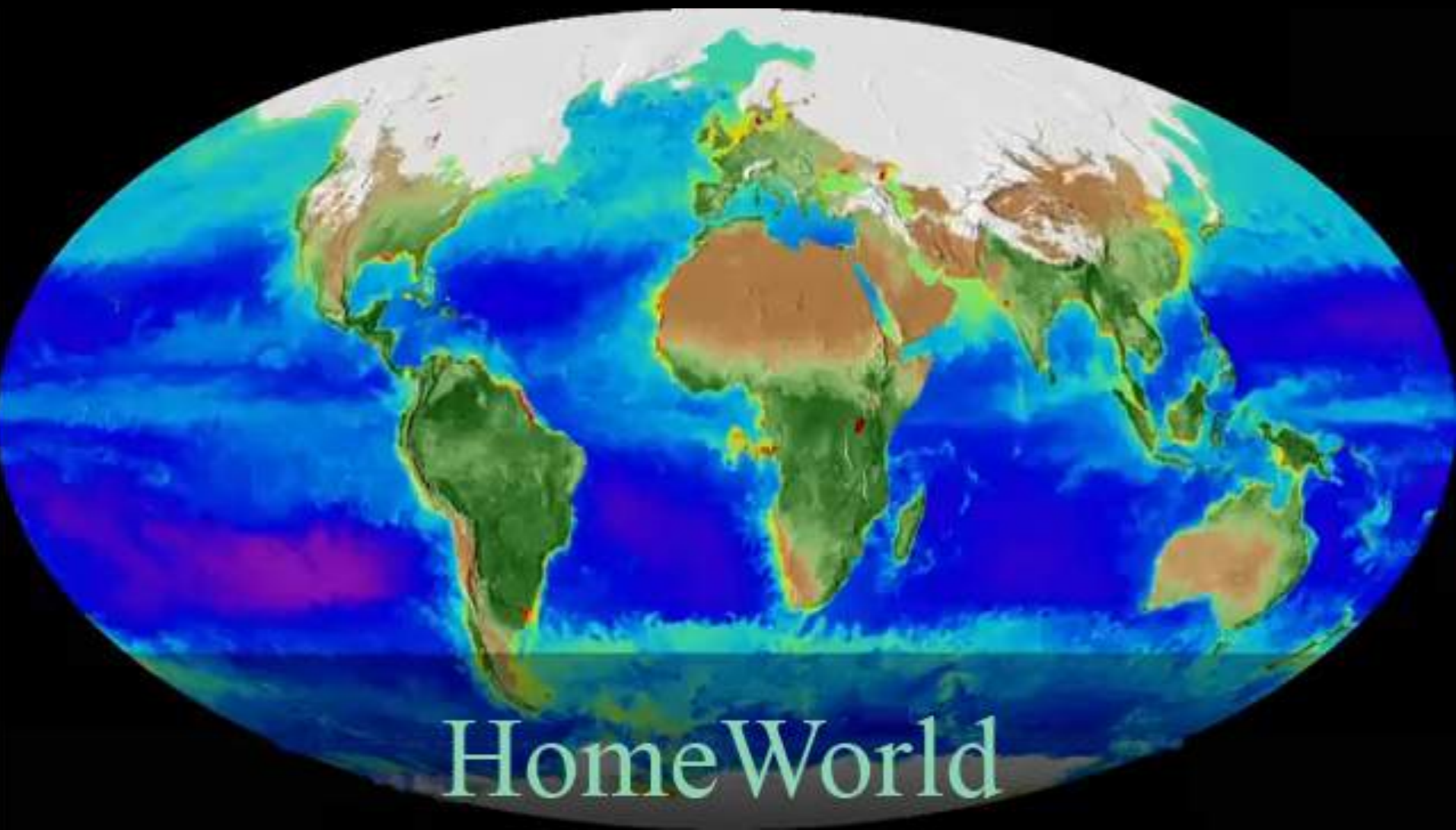


United Nations

Nearly all of the 17 Sustainable Development Goals (SDGs) are influencing this work (Slightly changed by the author after source of: <http://www.npr.org/sections/goatsandsoda/2015/09/25/443149821/u-n-dreams-big-17-huge-new-goals-to-build-a-better-world> and UNGA 2014a, b).



Source: slightly changed after <https://www.youtube.com/watch?v=N2Ra2fp5De8>; also compare <https://www.theguardian.com/science/video/2017/nov/18/its-a-delicate-place-nasa-captures-20-years-of-earths-seasonal-changes-video>



HomeWorld

Functioning ecological systems



http://www.filebuzz.com/fileinfo/5033/Living_Rainforest.html

Strengthening social abilities



<http://www.wahealtheducation.com.au/workshops-and-training/detail/parent-education-on-social-issues/>

Securing physical health



http://t2.gstatic.com/images?q=tbn:ANd9GcQnW7u6B_Qjbd4EfzceUnrHNCj_GA_ET2IRLDqh4g8oCPCKJO62

Enduring cultural heritage

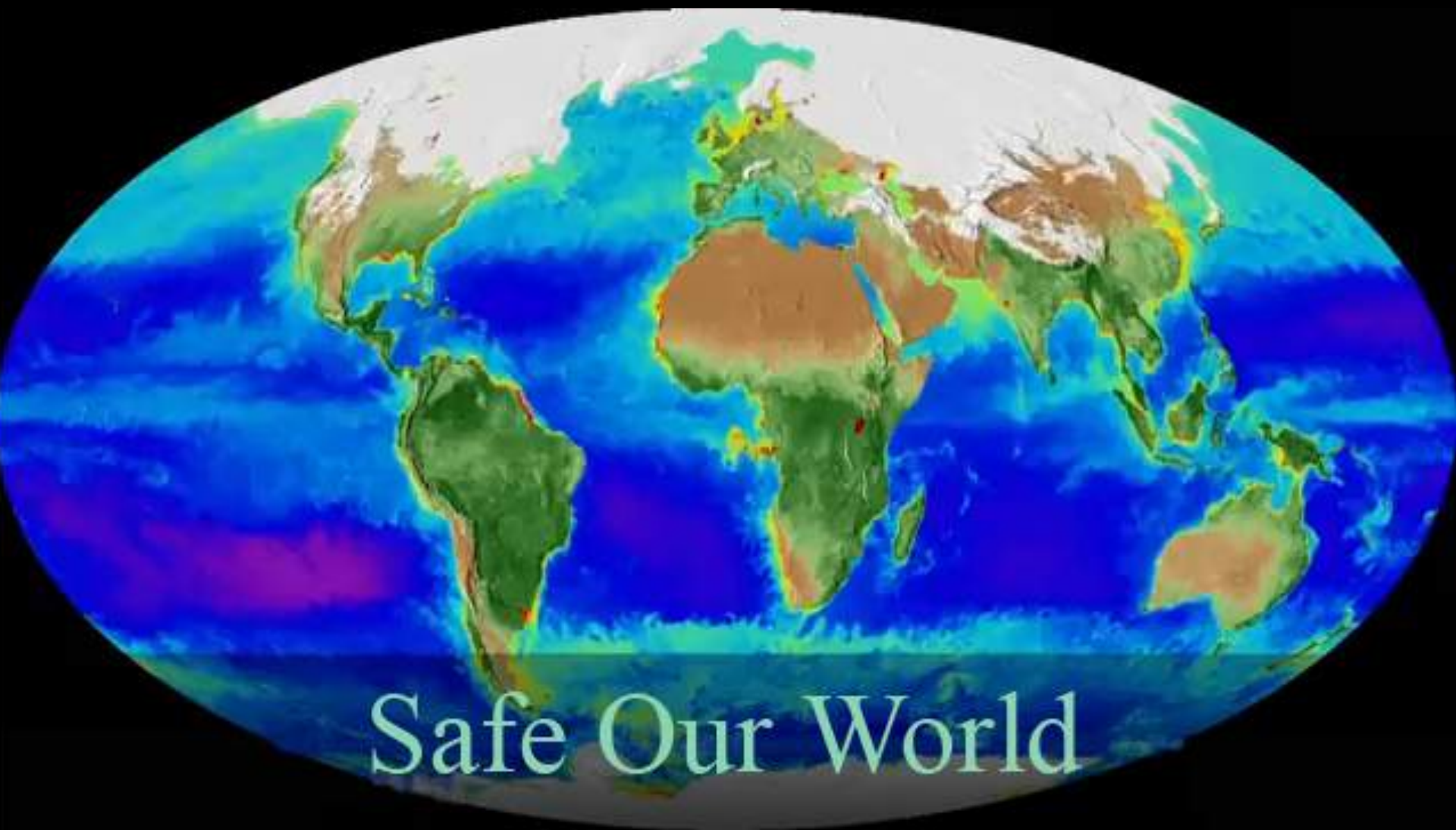


http://www.filebuzz.com/fileinfo/5033/Living_Rainforest.html

Facilitation of economical, commercial & service functions



<http://www.gevestor.de/details/daxprognose-88496.html>



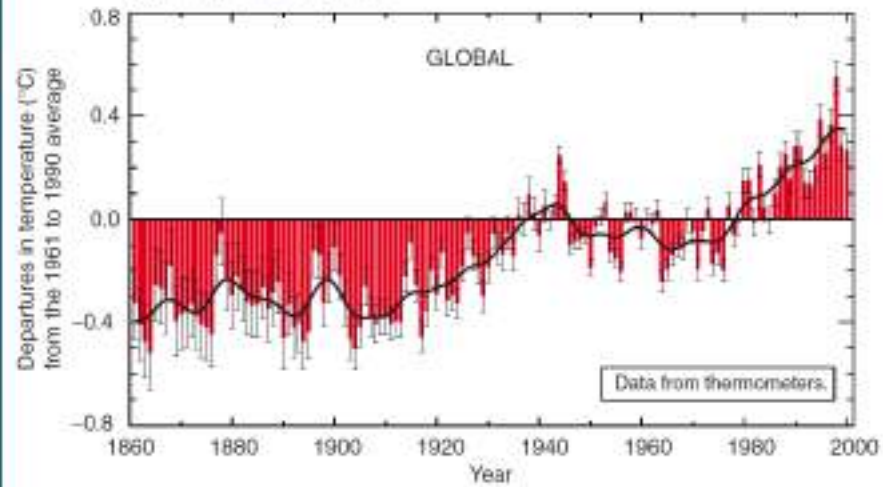
Safe Our World



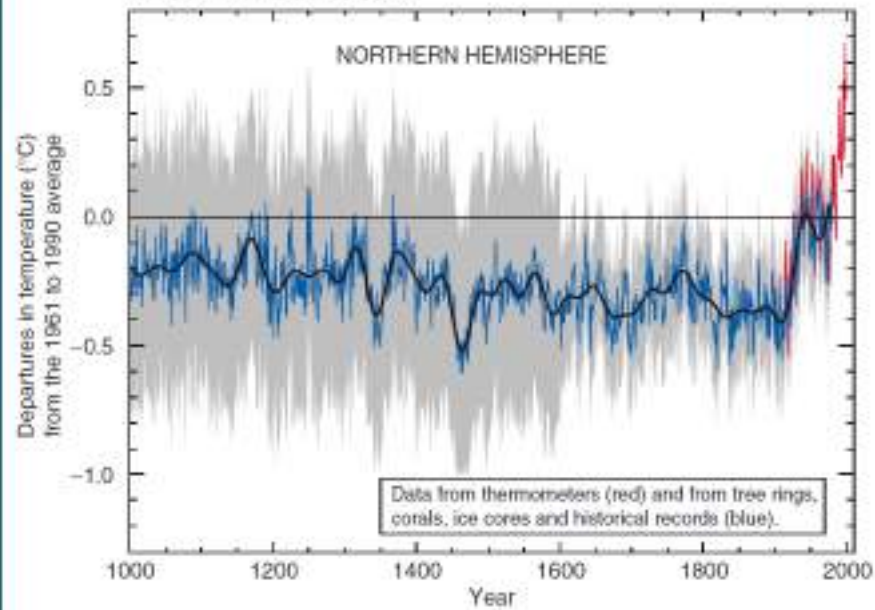
Source: <http://blog.joinmsn.com/usr/r/u/rudia0327/11/ahsk.jpg>

Variations of the Earth's surface temperature for:

(a) the past 140 years



(b) the past 1,000 years

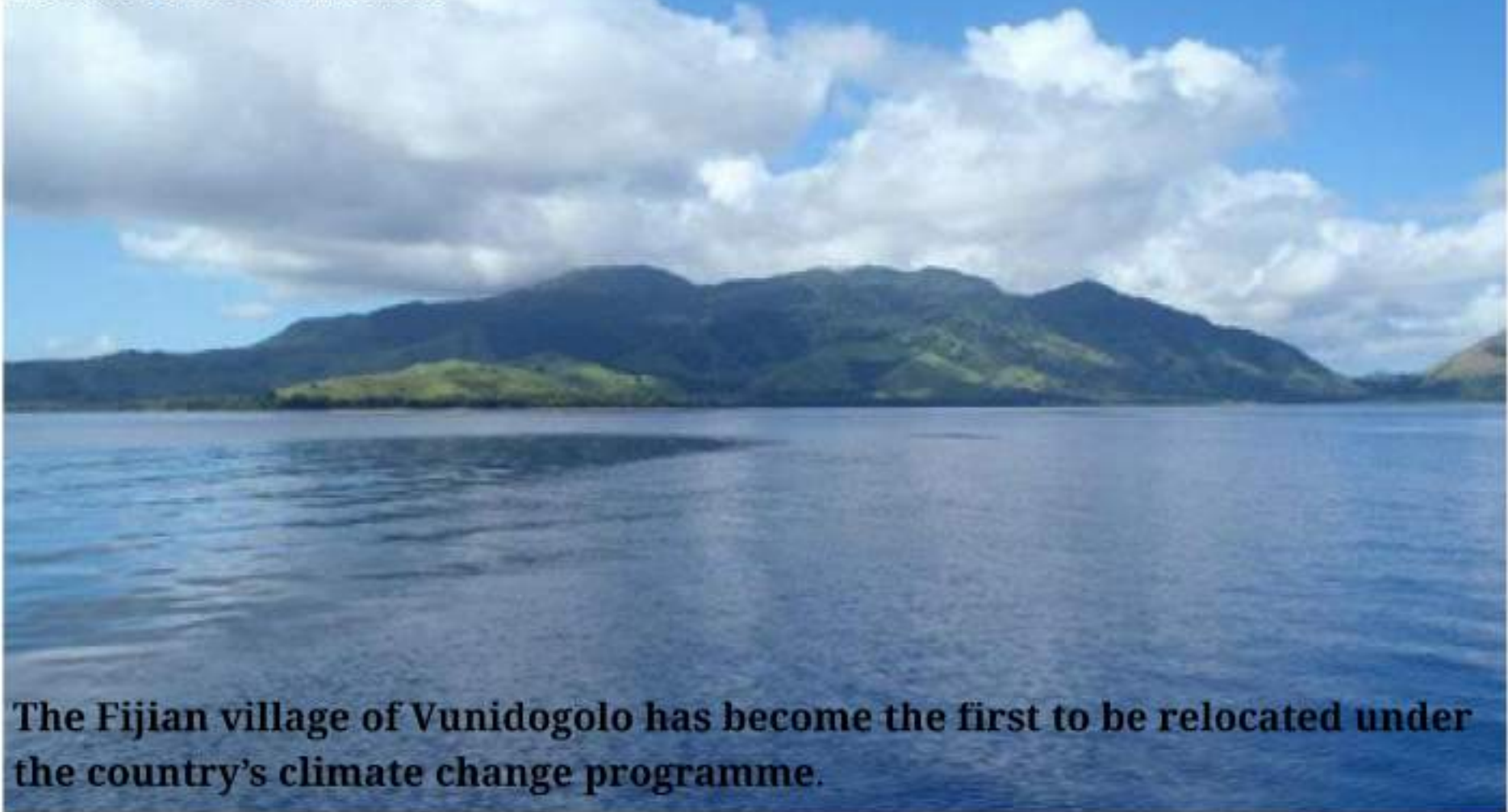


Source: *The Third Assessment Report of The Intergovernmental Panel on Climate Change (IPCC)*, page 3, Cambridge University Press, Cambridge 2001



Safe Our Souls

First community moved under national initiative as rising sea levels flood houses and farmlands



The Fijian village of Vunidogolo has become the first to be relocated under the country's climate change programme.

(Pic: Flickr/Frontierofficial) Published on 17/01/2014, 10:50am



© www.syltpress.de

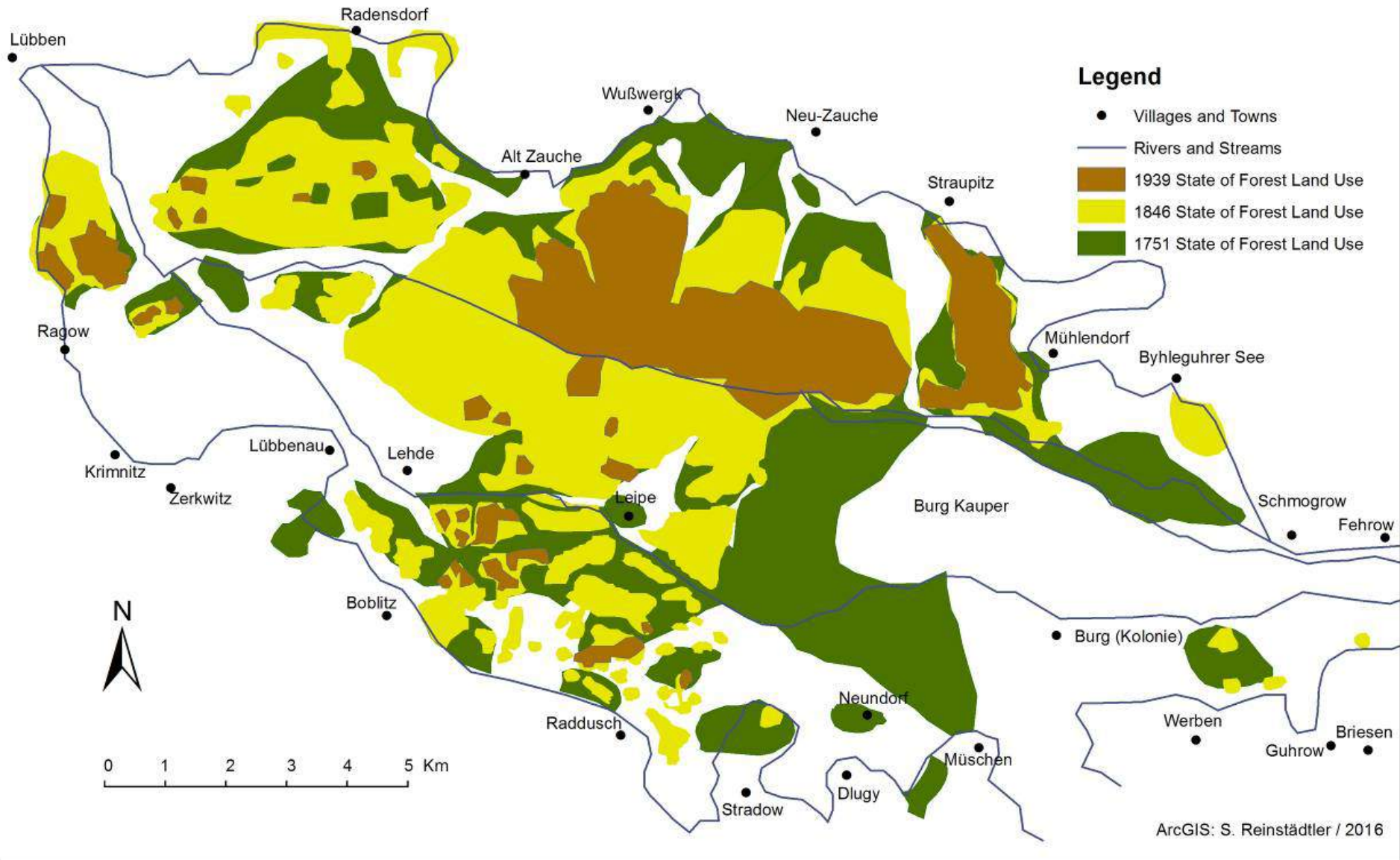




On **informal** planning level
any stakeholder, communal, regional or international (scientific) institution, university or administration can take the advantage of and support through projects or other processes within **the flagship – motivation of the SDGs**

Map with the exemplary in the Region of Lusatia derived and within the water network of Brandenburg placed parts of the Landscape Unit 1 of "Alluvial Fan Influenced Landscape with Wetland and Fließe Structures" of Spree Forest Inland Delta (drawn by the author, changed on the basis of map of "GEOBasis-DE/BKG 2016" and "Land Brandenburg 2016", data license: dl-de/by-2-0 (www.govdata.de/dl-be/by-2-0), "www.mlul.brandenburg.de/lu/gis/gewnet25.zip", "Gewässernetz des Landes Brandenburg, 2016")

Comparison of the Upper Spree Forest Forestry Land Use Development in the Perimeter of UNESCO MAB Reserve "Spreewald" in 1751, 1846 and 1939



Map of the forestry land use change in comparison of the years of 1751, 1846 and 1939 in Upper Spree Forest as an example for GIS-applied assessment in the processing roadmap for sustainable development (derived by the author with the basis-map of plane-table sheets and Reinstädtler 2014)



S. Reinstädler, September 2017



S. Reinstädler, September 2017



Source: S. Reinstädler, August 2013



S. Reinstädler, Mai 2012



Source: S. Reinstädler, August 2013



Source: S. Reinstädler, September 2017



Source: S. Reinstädler, August 2013



Source: S. Reinstädler, August 2013

“Values” or Ecosystem Services in Spree Forest – SDGs

- Water retention in times of low and high water rise – **SDG 15, 13, 6, 2, 3**
- Assimilative capacity – **SDG 13, 15**
- Carbon dioxide absorption – **SDG 13, 15**





A

D

C

B

Lieberose Heath area (Foto sources: A+B: S. Reinstädtler, 27.05.2017, C+D: S. Reinstädtler. 03.10.2015)



Thank You,

if taking

SDGs +

climate action

NOW!

**Yours Landscapes of
HomeWorld**