

Forest Landscape Restoration through behaviour change

Fairventures Worldwide gGmbH

Gefördert durch:



Bundesministerium
für Umwelt, Naturschutz,
Bau und Reaktorsicherheit

aufgrund eines Beschlusses
des Deutschen Bundestages



fairventures_worldwide



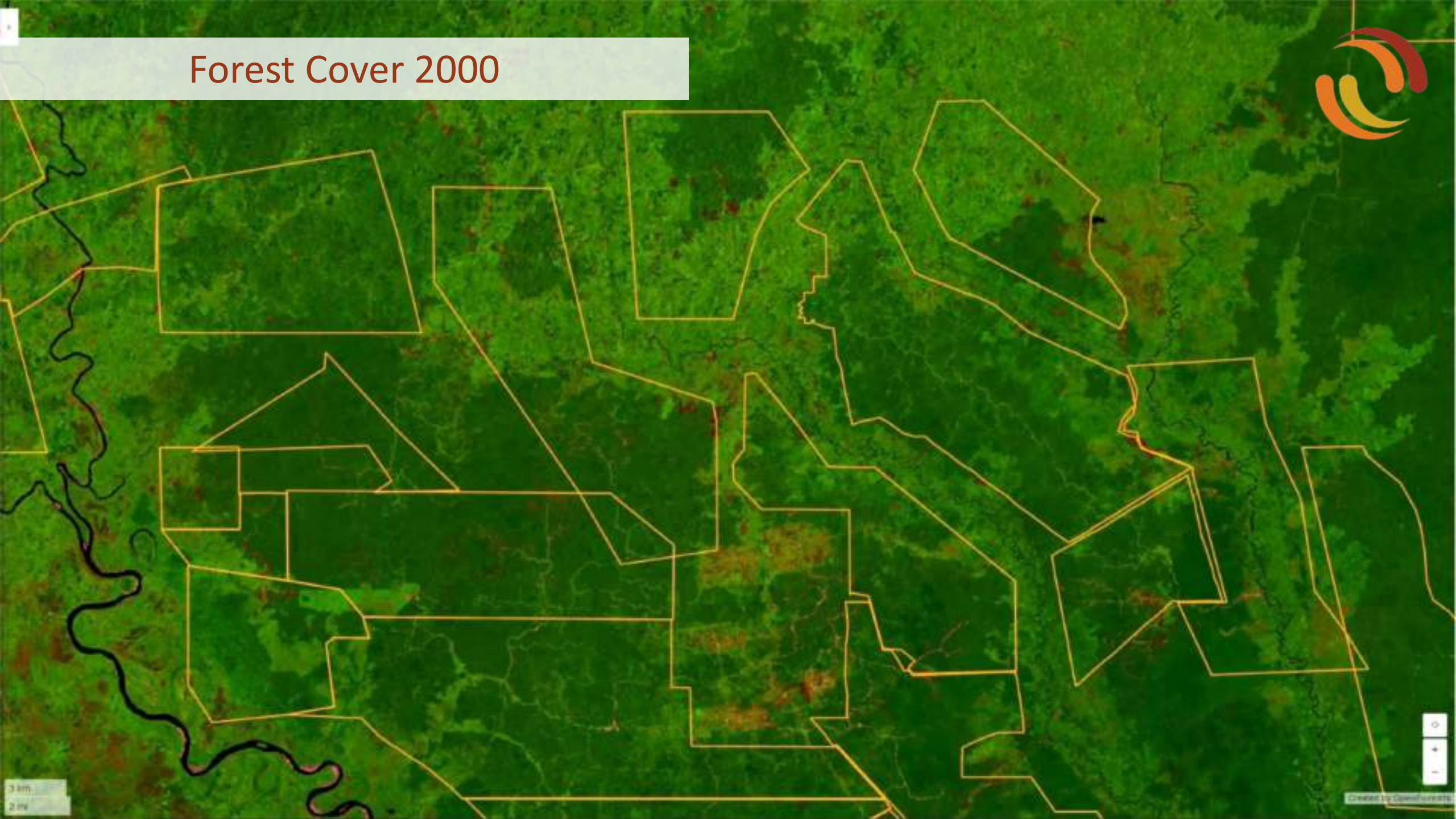
facebook.com/fairventures



Kalimantan, Indonesia



Forest Cover 2000



3 km
2 mi



Created by OpenStreetMap

Forest Cover 2015



Reasons:

- Logging
- Palm Oil
- Unsustainable agricultural practices
- Population pressure

Intensive community work leads to behaviour change



- Community meetings
- Peer to peer learning
- Study tours
- Individual consultancy with farmers
- Training by local trainers

Alternative farming practices



- Reforestation with fast growing lightwoods
- Organic agriculture
- Compost production



Community changes farming practices

Remaining Forests

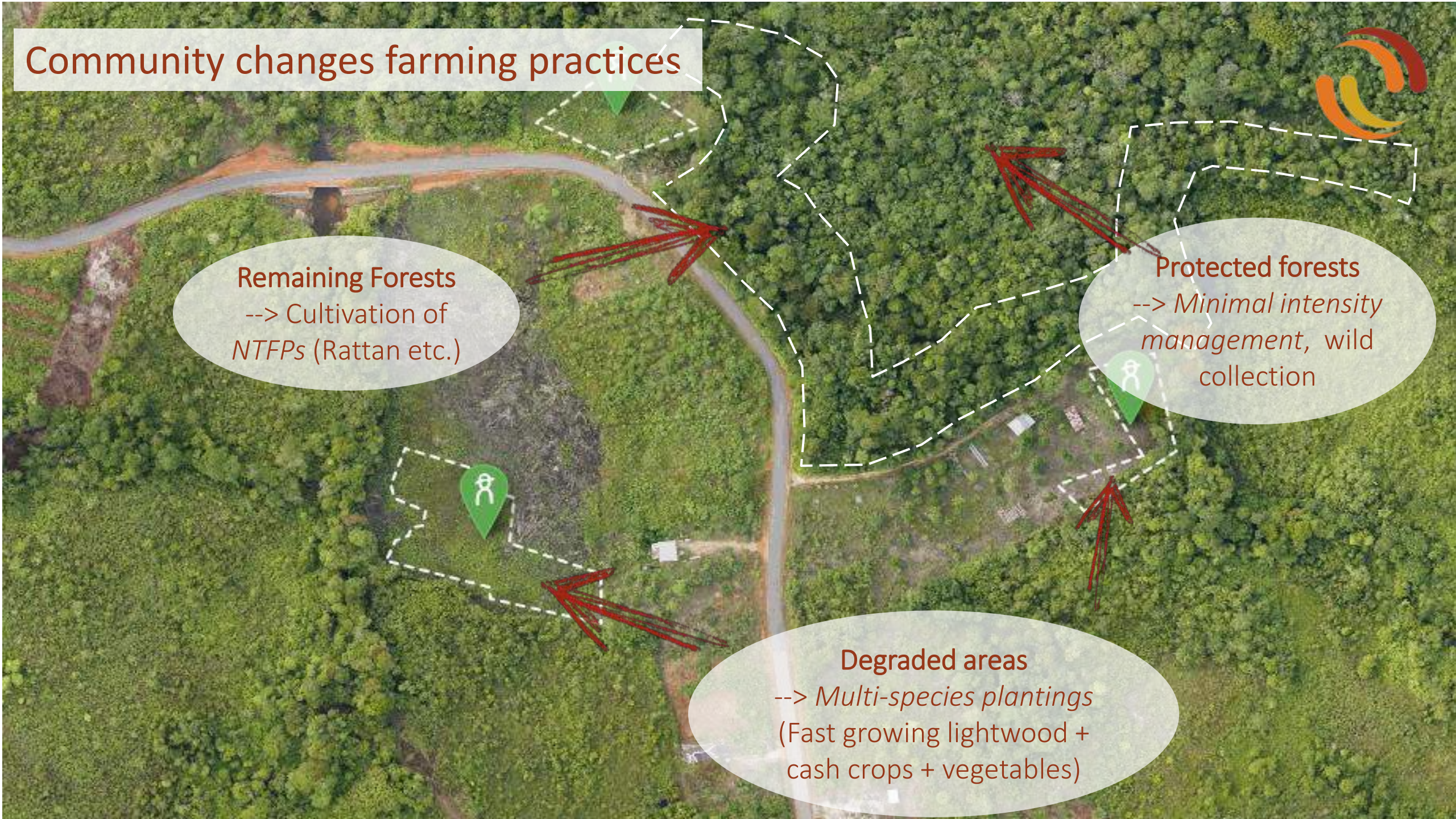
--> Cultivation of
NTFPs (Rattan etc.)

Protected forests

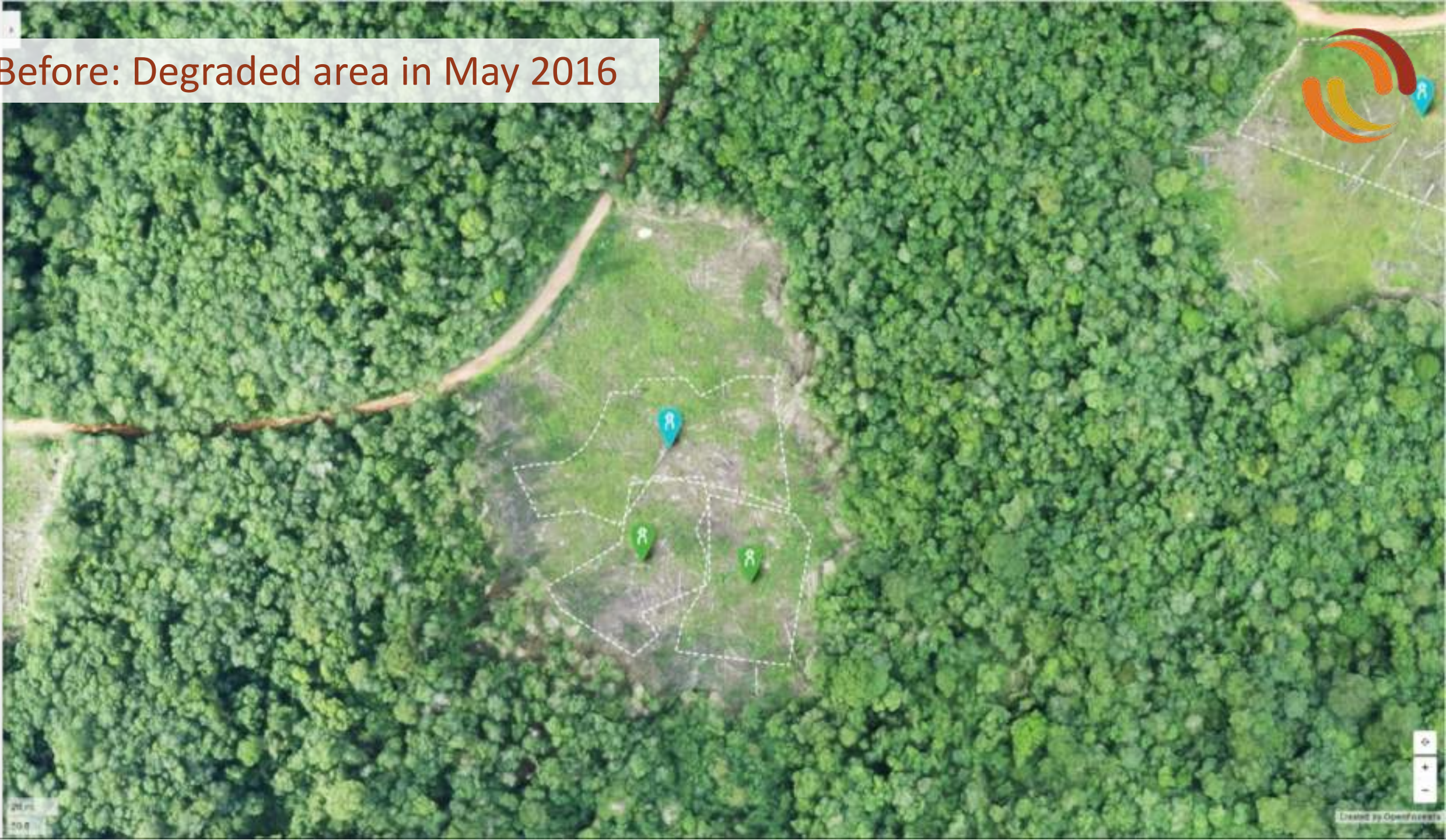
--> *Minimal intensity*
management, wild
collection

Degraded areas

--> *Multi-species plantings*
(Fast growing lightwood +
cash crops + vegetables)



Before: Degraded area in May 2016



After: Same area in May 2017



After two years...





Additional example from our other program component



Furniture competition:

New designs can shift consumer perceptions!


Lightwood as a material for furniture instead of hardwood

Thank you for your kind attention!



Fairventures Worldwide FVW gGmbH
Panduh Tukat

panduh.tukat@fairventures.org
[fairventures.org / karte.1mtrees.org](http://fairventures.org/karte.1mtrees.org)

 [fairventures_worldwide](https://www.instagram.com/fairventures_worldwide)

 [facebook.com/fairventures](https://www.facebook.com/fairventures)